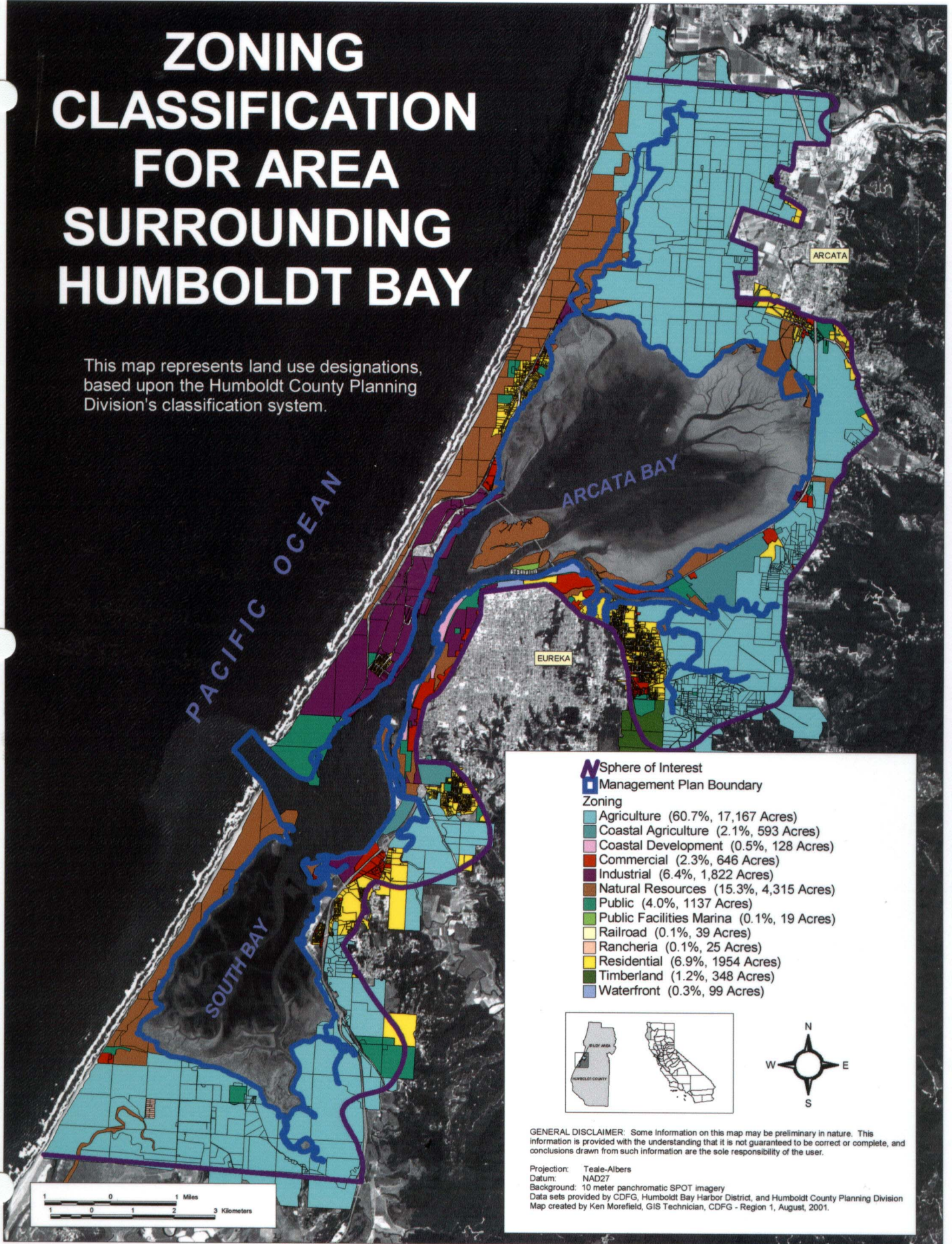


ZONING CLASSIFICATION FOR AREA SURROUNDING HUMBOLDT BAY

This map represents land use designations, based upon the Humboldt County Planning Division's classification system.



- Sphere of Interest
- Management Plan Boundary
- Zoning**
- Agriculture (60.7%, 17,167 Acres)
- Coastal Agriculture (2.1%, 593 Acres)
- Coastal Development (0.5%, 128 Acres)
- Commercial (2.3%, 646 Acres)
- Industrial (6.4%, 1,822 Acres)
- Natural Resources (15.3%, 4,315 Acres)
- Public (4.0%, 1,137 Acres)
- Public Facilities Marina (0.1%, 19 Acres)
- Railroad (0.1%, 39 Acres)
- Rancheria (0.1%, 25 Acres)
- Residential (6.9%, 1,954 Acres)
- Timberland (1.2%, 348 Acres)
- Waterfront (0.3%, 99 Acres)



GENERAL DISCLAIMER: Some information on this map may be preliminary in nature. This information is provided with the understanding that it is not guaranteed to be correct or complete, and conclusions drawn from such information are the sole responsibility of the user.

Projection: Teale-Albers
 Datum: NAD27
 Background: 10 meter panchromatic SPOT imagery
 Data sets provided by CDFG, Humboldt Bay Harbor District, and Humboldt County Planning Division
 Map created by Ken Morefield, GIS Technician, CDFG - Region 1, August, 2001.

